



**FOR LEASE**  
**FULL 15TH FLOOR**  
**AVAILABLE 4/1/2027**  
**12,387 RSF**



## CURRENT LAYOUT

- Full floor
- Large reception area
- Two (2) private balconies
- Large Board room
- Six (6) glass offices
- Large open areas for workstations or collaboration
- Open break room area

## INCLUDES ACCESS TO ALL OF 200 CENTRAL'S PREMIERE AMENITIES

- Four (4) on-site restaurants
- Fitness center featuring fully equipped gym with state of the art equipment and training machines, free weights, yoga room, full shower and restroom facilities
- Collaboration lobby with wifi
- Common area conference room with adjustable modular table system, 75" 4K TV/ Monitor, wet bar, seats up to 14 at table
- On-site management
- On site bank, dentist, med spa, and dry cleaning services

## INNOVATIVE



## SLEEK, MODERN DESIGN

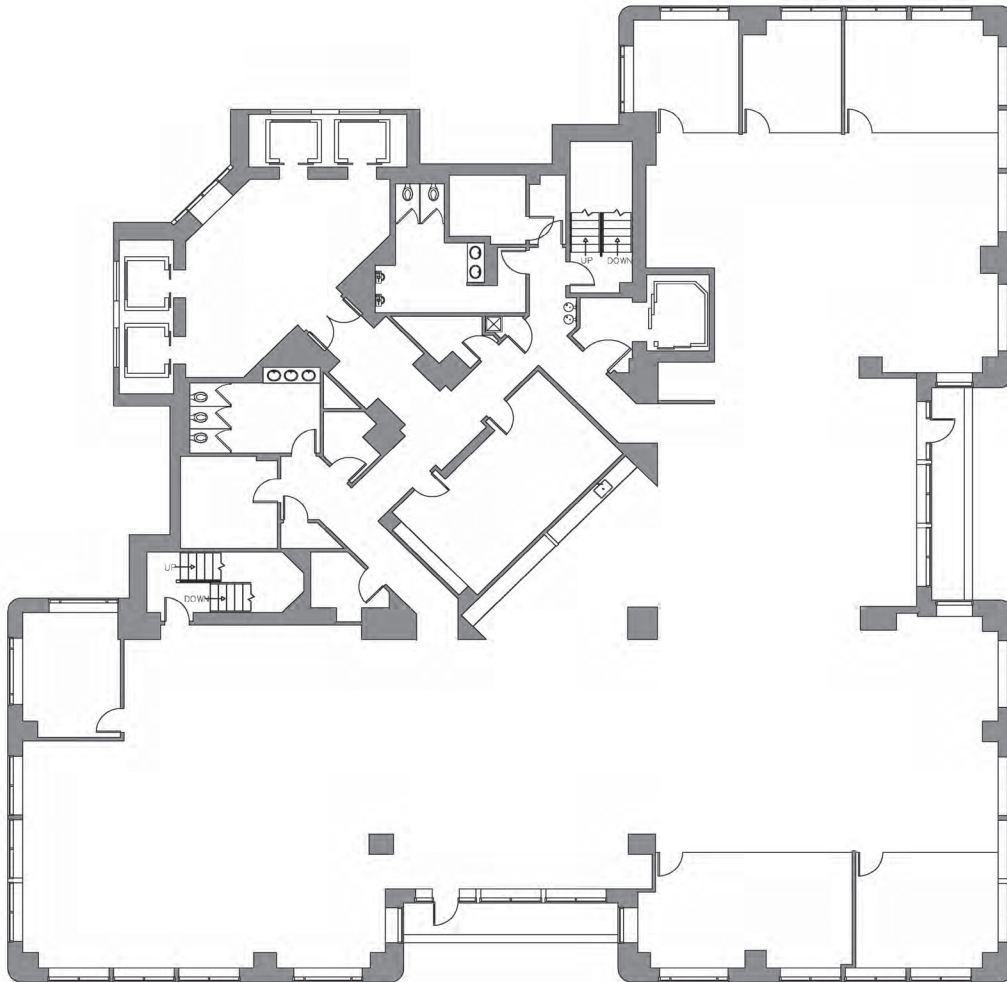


## COLLABORATIVE ENVIRONMENT



# 20 CENTRAL

# FLOOR PLAN



## CONTACT

Wendy Giffin  
Executive Director  
+1 727 599 3799

[wendy.giffin@cushwake.com](mailto:wendy.giffin@cushwake.com)