



**FOR LEASE**  
**FULL 18TH FLOOR**  
**AVAILABLE 4/1/2027**  
**12,443 RSF**



## CURRENT LAYOUT

- Full floor
- Water views
- 19 glass offices
- Large board room
- Several open areas for workstations
- Open break room
- Private elevator lobby and restrooms

## INCLUDES ACCESS TO ALL OF 200 CENTRAL'S PREMIERE AMENITIES

- Four (4) on-site restaurants
- Fitness center featuring fully equipped gym with state of the art equipment and training machines, free weights, yoga room, full shower and restroom facilities
- Collaboration lobby with wifi
- Common area conference room with adjustable modular table system, 75" 4K TV/ Monitor, wet bar, seats up to 14 at table
- On-site management
- On site bank, dentist, med spa, and dry cleaning services

### INNOVATIVE

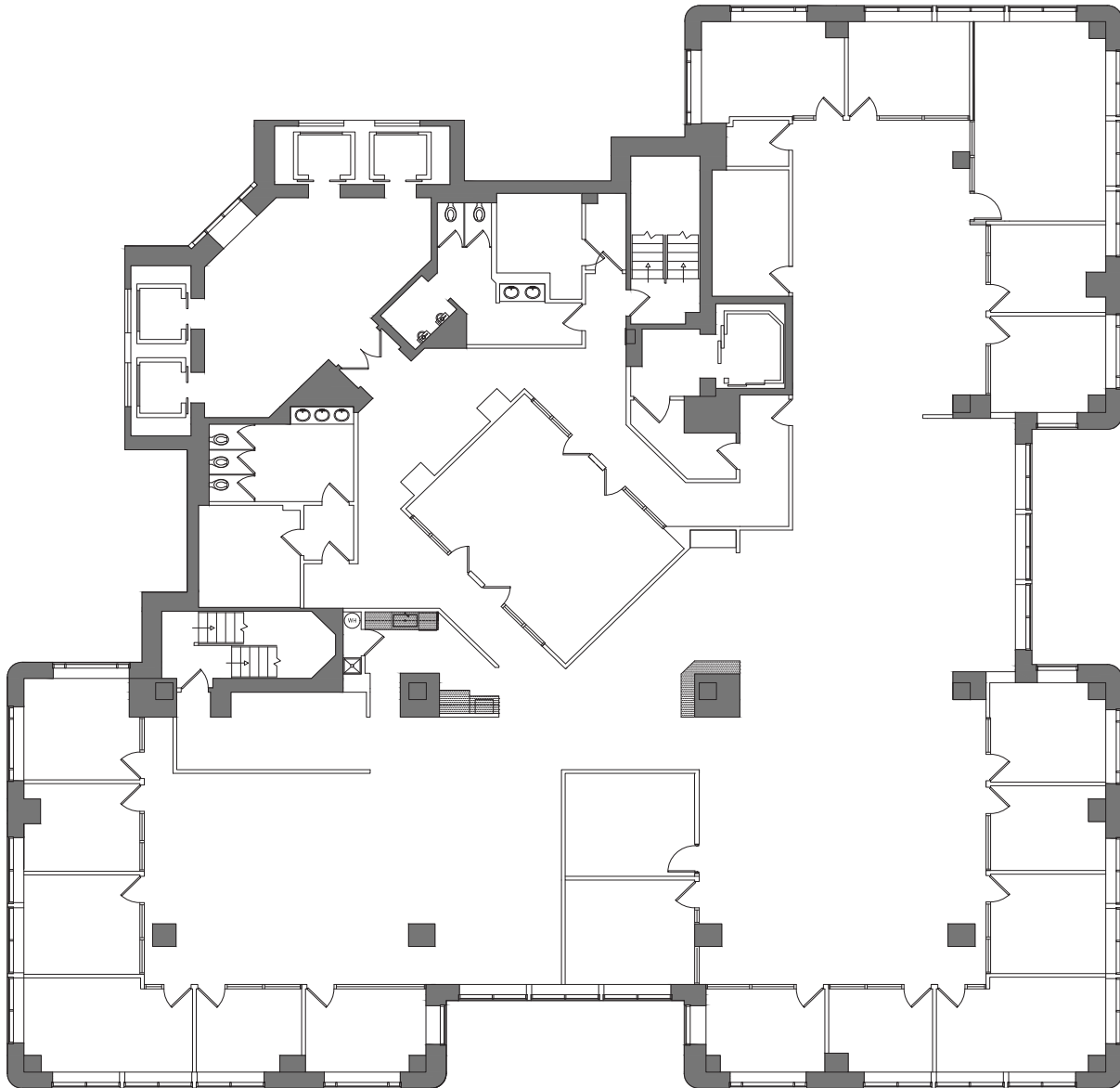


### SLEEK, MODERN DESIGN



### COLLABORATIVE ENVIRONMENT





## CONTACT

Wendy Giffin  
Executive Director  
+1 727 599 3799

wendy.giffin@cushwake.com